



1041-62PH in Leather 946-72

FLEXSTEEL®

Henry | 1041



1041-62PH in Leather 946-72



1041-62PH in Leather 946-72



ZERO GRAVITY

© Flexsteel Industries, Inc. | Last Updated 02/29/2024

ARRAY

64PH
62PH
60PH
50PH

FEATURES

Flexsteel Spring Unit

● DualFlex

Back Construction

● Attached

Seat Construction

● Attached

Seat Cushion(s)

● High-Density (HC)

● Standard

○ Optional

PRODUCT DIMENSIONS

OVERALL

Height Width Depth

SEAT

Height Width Depth

Arm
Height
Open
Depth
Wall
Clearance

Power Reclining Loveseat with Console
& Power Headrests & Lumbar
-64PH

44" 75" 41" 21" 44" 22" 27" 68" 7"

Power Reclining Sofa with Power
Headrests & Lumbar
-62PH

44" 86" 41" 21" 67" 22" 27" 68" 7"

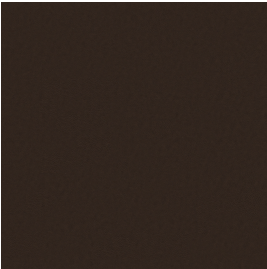
Power Reclining Loveseat with Power
Headrests & Lumbar
-60PH

44" 63" 41" 21" 44" 22" 27" 68" 7"

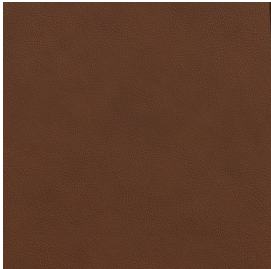
Power Recliner with Power Headrest &
Lumbar
-50PH

44" 40" 41" 21" 22" 22" 27" 68" 7"

Stocked Colors



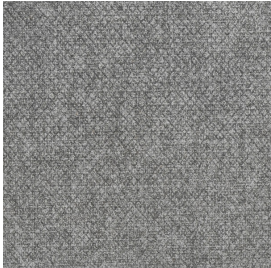
Burnt Umber
946-71
Leather/Match



Caramel
946-72
Leather/Match



Beige
946-80
Leather/Match



Fog
425-01
Fabric

Printed samples may vary from actual swatches. Please refer to swatches for actual color.

NOTES

- Sculptural, padded arms with a refined welt trim fade into the seat
- Contoured seat with waterfall chaise cradles you in while the divided back provides lower back comfort
- Customize your comfort with a power control that adjusts the recline, headrest, and lumbar
- Zero Gravity recline puts you in the ideal position that reduces pressure and gives you a feeling of weightlessness
- The power control includes a USB-A port for convenient charging
- Built to last with our patented Flexsteel DualFlex Spring System —sturdy steel ribbons attached to flexible coils that offer a wide range of motion and durability
- Available in one fabric and three top-grain leather choices that are durable for everyday use
- Removable back for easy moving throughout the home
- The center console includes two cupholders and a storage compartment that contains two electrical outlets and two USB-A ports
- The power control allows you to independently adjust the recline, headrest, and lumbar support.
- A separate home button returns the headrest, footrest, and lumbar support to their original positions with one touch.
- A USB port is included on the power control for powering electronics.
- Zero draw technology only uses power when the USB port is in use.



Power Recline,
Headrest, & Lumbar